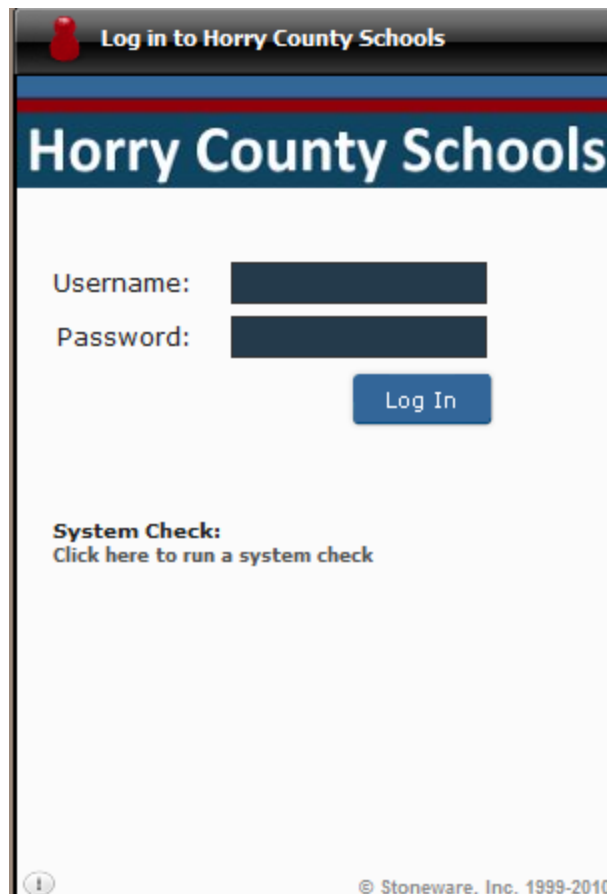


Stoneware Cloud Computing

- Stoneware Private Cloud Link – <https://sw.horrycountyschools.net>
 - Can be securely accessed from in or outside of our network
- Uses your existing Windows Login credentials
- Grants access to H drive and teacher/staff shares from home
- Will work with all up-to-date mainstream Web Browsers
 - Internet Explorer, Firefox, Safari, etc.
- Mobile interface run on any smartphone device supporting HTML and Javascript
 - Access to your files from anywhere

Logging in and File Management

1. Go to <https://sw.horrycountyschools.net> in your preferred web browser.
2. You will be prompted for your Username and password.



Log in to Horry County Schools

Horry County Schools

Username:

Password:

Log In

System Check:
Click here to run a system check






© Stoneware, Inc. 1999-2010

- Before logging in, click the System Check link. This will ensure you have all required components. If needed click the provided links within the System Check to install any needed software.

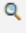



The screenshot shows a window titled "System Check" with a toolbar containing a refresh icon, a maximize icon, and a close icon. The window is divided into two main sections: "System Information" and "System Check".

System Information

User Agent:	 Mozilla/4.0 (compatible; MSIE 8.0; Windows NT 6.1; Trident/4.0; SLCC2; .NET CLR 2.0.50727; .NET CLR 3.5.30729; .NET CLR 3.0.30729; Media Center PC 6.0; InfoPath.3; .NET CLR 1.1.4322)
Operating System:	 Windows 7
Browser Type:	 Internet Explorer 8.0
Screen Resolution:	 1680 x 1050
Current Relay:	 ExternalRelay3

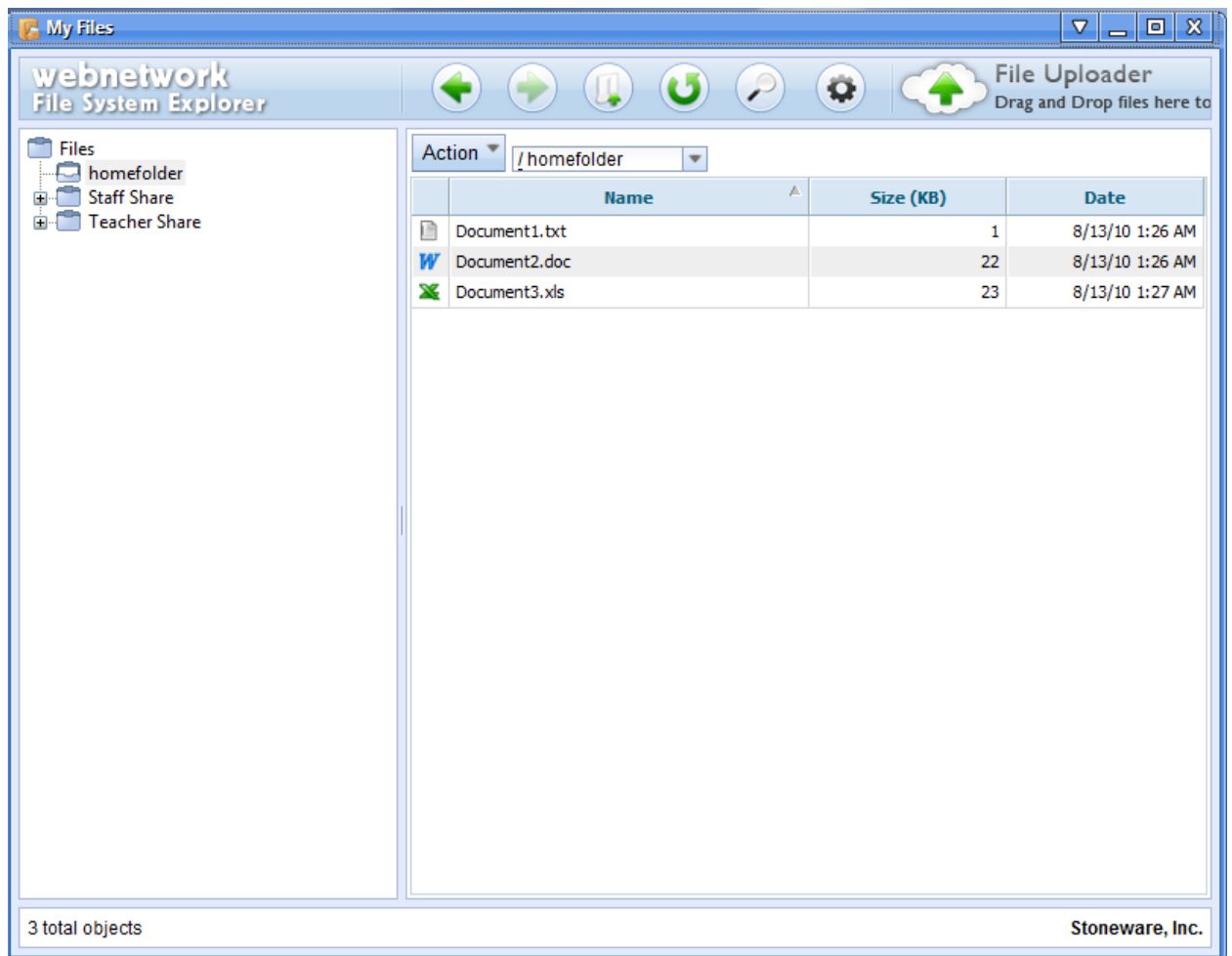
System Check

Java Plug-in Version:	 1.6.0_21 
Java Test:	 Java Successfully Tested
Pop-up Blocker:	 Popup Blocker Successfully Tested

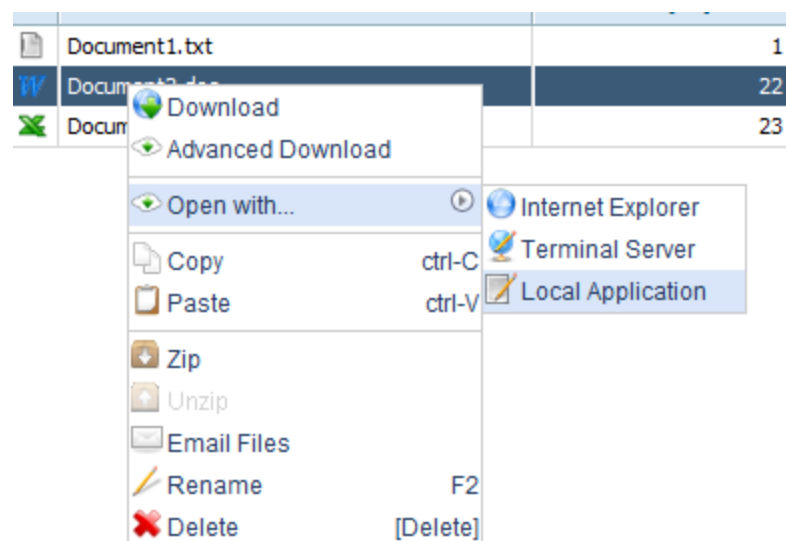
- Once you have all green checks you can close the window and enter your credentials. This will bring up your Stoneware Virtual Web Desktop. From here you will have access to your network files and published applications.



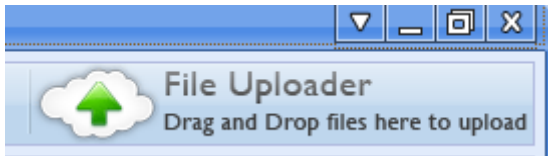
- On your desktop you have an icon named "My Files." This is where your network stored files are located. Single click to open the file manager. Folders that you have access to will show up on the left side. "Homefolder" is your H drive.



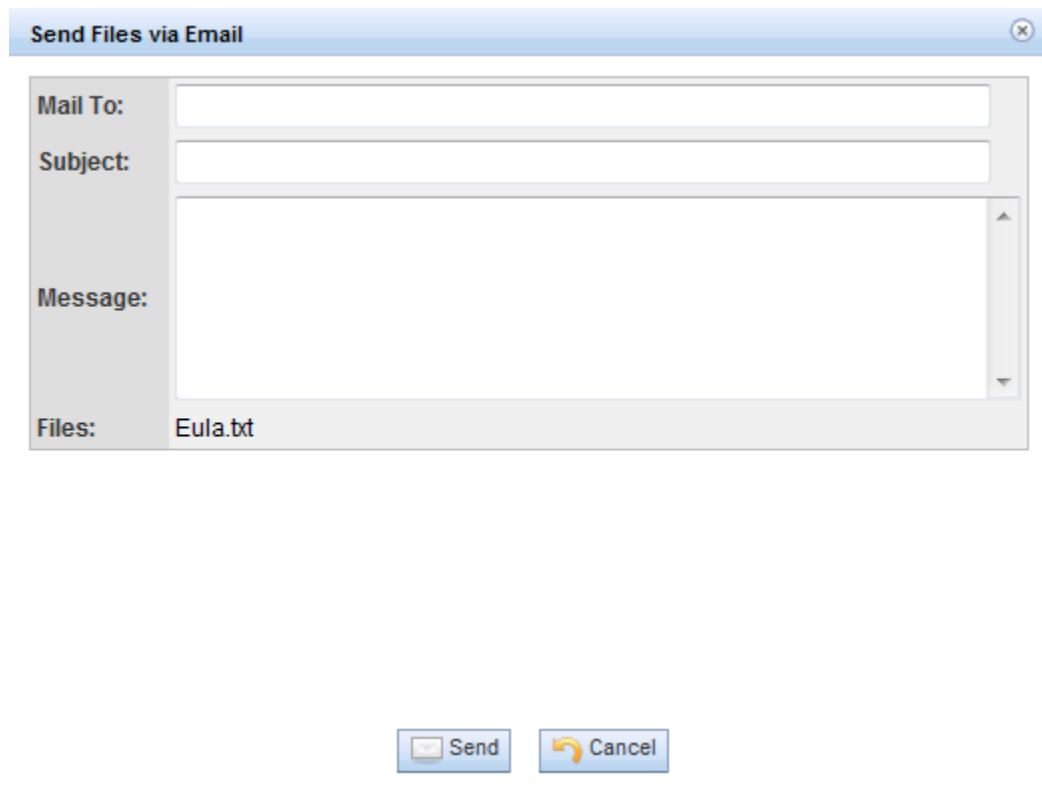
- From here you can download, upload, and even edit your files. Right click on the document that you want to edit. From that context menu hover over "Open with..." and then select "Local Application." This will open the file on your local machine.



7. Once you've made your changes, just save and close as you normally would. The updated file will automatically upload back to your H drive.
8. Files from your home computer can be uploaded to your H drive from here. Simply drag and drop your file into the "File Uploaded" section of the "My Files" window. Once the upload is complete you will receive a completion message.

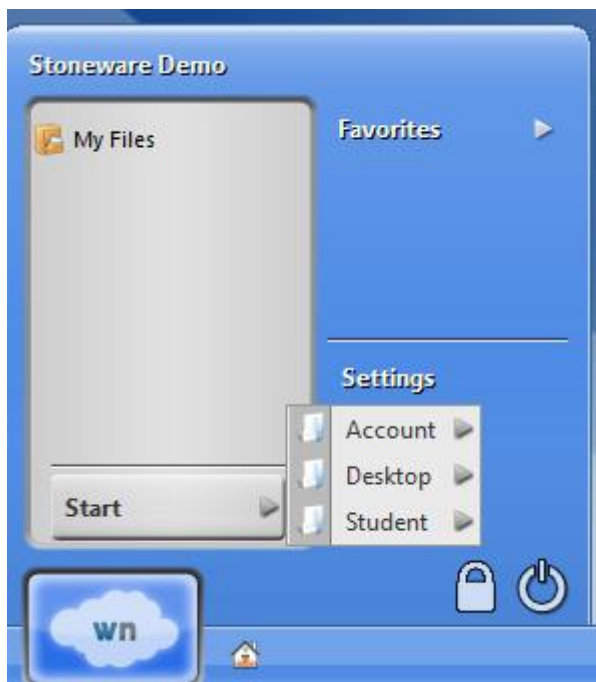


9. Files can also be emailed from here. Simply right click the file and choose "Email files." An email form will open with your file attached. After you enter the email address you have the option to add a subject and message body. To finish just click send.

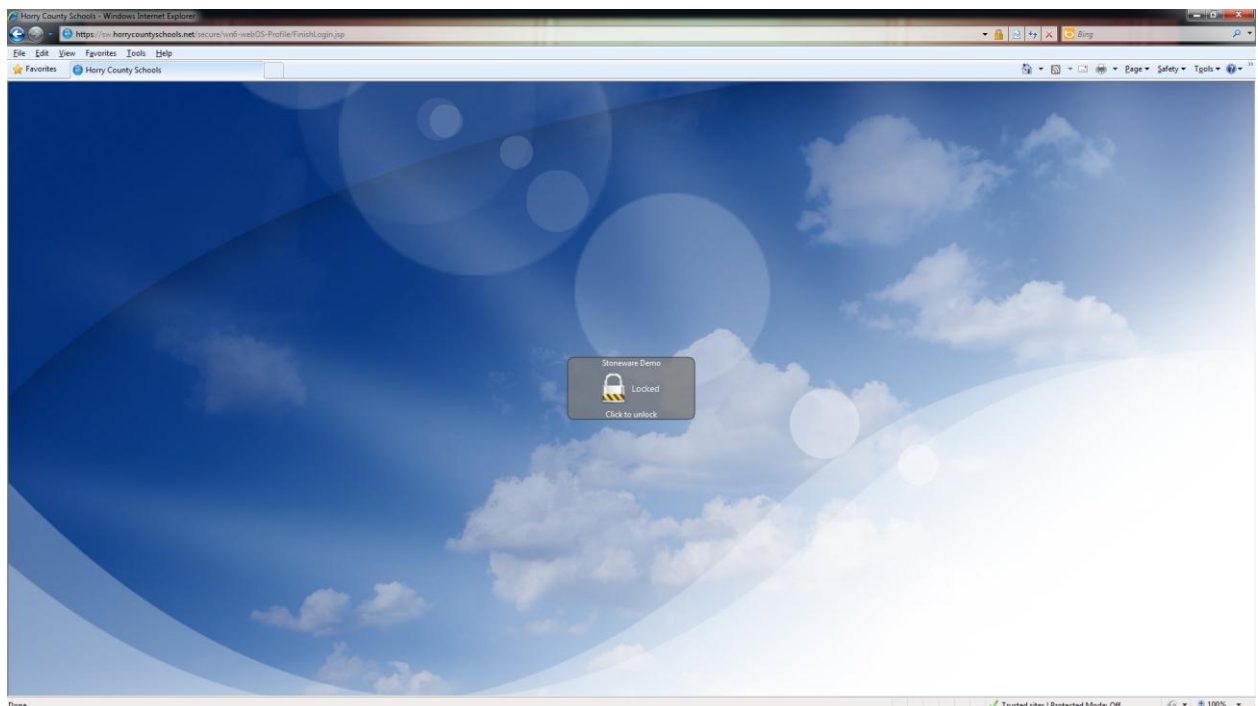
A screenshot of a "Send Files via Email" dialog box. The dialog has a blue title bar with a close button. The main area is divided into sections: "Mail To:" with a text input field, "Subject:" with a text input field, "Message:" with a large text area, and "Files:" with a list showing "Eula.txt". At the bottom, there are two buttons: "Send" (with an envelope icon) and "Cancel" (with a curved arrow icon).

Menu Structure and Logging Out

1. The menu structure is based off of Windows Vista/7. We can build custom menus to mirror what you are already using on the desktops and laptops in the schools. Your most used applications will also show in the left pane.



2. One of the new features in Stoneware version 6 is the lock feature. This allows you to lock your session without logging you out. Just click the Lock icon pictured above and you will receive this screen.



3. To log back in click the padlock and enter your password. The power icon beside the lock button on the start menu will log you out of Stoneware, bringing you back to the login screen and securely ending your session.